

For nearly 200 years, The Franklin Institute has played a central and constantly evolving role in meeting the educational needs of our community and being the place for individuals from the region to learn about and experience science, technology, engineering, and mathematics (STEM) programs.



**THE
FRANKLIN
INSTITUTE**

2022 YEAR IN REVIEW

INSPIRE

We are thrilled to have welcomed nearly
818,000 VISITORS

in 2022!

570,000
more than
in 2021!



THE FRANKLIN INSTITUTE *Awards*

Presented by
BANK OF AMERICA

We celebrated the interdisciplinary work of the CEOs of Moderna, Pfizer, and Johnson & Johnson, along with the scientists responsible for the fundamental research enabling the use of the mRNA vaccine platform.

TFI was recognized with a Mid-Atlantic Regional Emmy Award for the Awards video "Breakthrough," a behind-the-scenes look at the triumphs and tribulations of COVID-19 vaccine researchers and manufacturers.



Over
80,000

discounted and free visits provided for students, groups, and families.



SCIENCE AFTER HOURS



FRANKLIN FRIGHT!



FRANKLIN FROST

WE CELEBRATED, UPLIFTED, AND LEARNED FROM ONE ANOTHER

CELEBRATION OF
AFRICAN AMERICANS
IN SCIENCE

CELEBRATE
ASIAN AMERICAN +
PACIFIC ISLANDER
MONTH

FAMILY
PRIDE
DAY

CELEBRATE
HISPANIC
HERITAGE
MONTH

Braskem

Official Diversity, Equity, Access & Inclusion Partner



Announcement of The Boeing Company's \$3M investment in a **NEW** space science exhibit, opening in fall 2023.



**521,000
Visitors**

Harry Potter: The Exhibition was one of the most successful special exhibitions in the history of The Franklin Institute, and the City of Philadelphia. Visitors came for Harry Potter and stayed for the Institute's STEM exhibits, live demonstrations, and planetarium shows.

VISITORS CAME FROM
Every Pennsylvania county
Every US state and territory
Over 45 countries

ASSOCIATE SPONSOR



AN EXELON COMPANY

LAUNCHED NEW DIGITAL PLATFORM

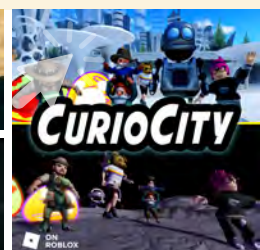
PODCAST: **So Curious!**

VIDEO SERIES: **A Practical Guide to the Cosmos**

VIDEO SERIES: **Ingenious: The Evolution of Innovation**

GAME: **Roblox CurioCity**

beyond.fi.edu



OUR MISSION:

In the spirit of inquiry and discovery embodied by Benjamin Franklin, the mission of The Franklin Institute is to inspire a passion for learning about science and technology.



The Franklin Institute provides free, intensive youth education programs for Philadelphia-area students, and has set itself apart as a national leader in creating informal STEM education programs across the country.

EDUCATE

Youth Education Programs

125 students in Partnerships for Achieving Careers in Technology and Science (PACTS) and STEM Scholars from **30 middle schools** and **36 high schools** across Philadelphia



STEM Scholars Class of 2022

Received **122 college acceptances** and over **\$4M in scholarship offers!**



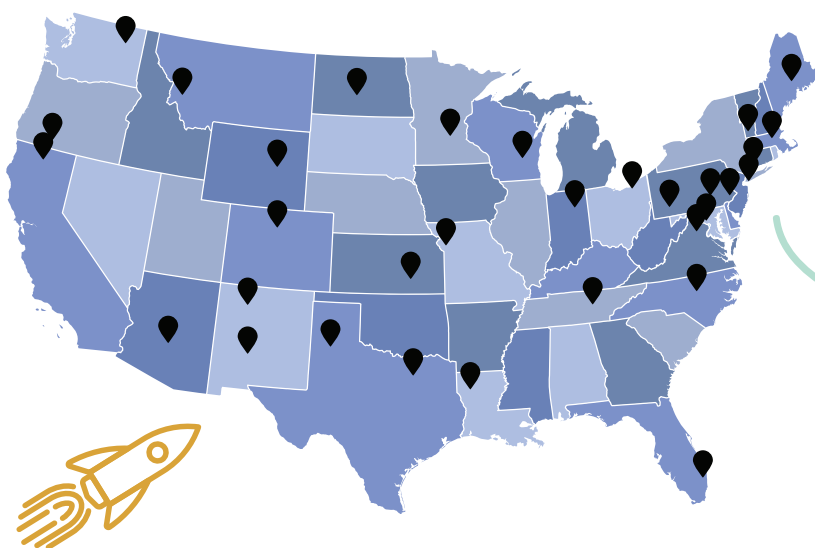
Currently I am two years away from becoming a physician and I know for sure that I would not be here without PACTS

—PACTS alumnus



Philanthropy supported TFI's mission and vision that seek to make STEM learning more equitable and accessible for students and families from underresourced Greater Philadelphia communities

The Institute's National Network of STEM education programs reach deep into under-resourced communities across **33 states** and the **District of Columbia**.



GSK's Science in the Summer reached over **17,800 youth** nationally & **5,580 youth** in Philadelphia



39,800 youth across the country participated in **Leap into Science** programming



Mission2Mars' first cohort had over **4,000 youth participants**, with **400 from Philadelphia**



Hosted all new **Science Matters: A Conversation Lab** in partnership with **brainSTIM Center at the University of Pennsylvania**. Guests were invited to the Institute to learn, reflect, converse and be a part of what matters in science.



TFI piloted a professional development program for **16 out-of-school time educators** from **14 rec centers** in West Philly. The learnings from this pilot program will help shape professional development offerings in the years ahead.

This program was carried out in partnership with Philly's Parks and Rec department and generously underwritten by Spark Therapeutics.

The Franklin Institute inspires and educates the next generation of scientists, engineers, thought leaders, and problem solvers. This would not be possible without generous philanthropic support.